



## Circled in Stone

Exeter's City Wall (of which almost 70% still remains) is inextricably linked with the history of the city. Being almost 2000 years old, it has repelled rebellions and has been the scene for many civic ceremonies and celebrations.



This leaflet will guide you to 9 information panels. At each site discover the key events that have affected the wall and the people of Exeter. For children there are quizzes and puzzles to solve along the way so bring paper and a pencil with you.



## Find out more about Exeter's City Wall



### Exeter City Wall Devon Archaeological Field Guide

Number 12A  
Detailed guide exploring the history and archaeology of the city wall.



Visit Exeter City Council's Time Trail at [www.rammtime-trail.org.uk](http://www.rammtime-trail.org.uk) and discover more about the city wall and Exeter in general.

Join a **FREE** guided tour of Exeter's City Wall with Exeter's Red Coat Guides. For more information call 01392 265203 or visit [www.exeter.gov.uk/guided-tours](http://www.exeter.gov.uk/guided-tours)



## Enjoyed this trail?

Why not weave your way through Exeter's industrial past on 'The Exeter Woollen Trail' - Explore the key sites involved in Exeter's woollen cloth industry or explore Exeter's medieval sites on the 'Medieval Trail'. Trail leaflets are available from Exeter Visitor Information & Tickets and the Quay House Visitor Centre.



## Exeter's heritage attractions include:

**Exeter Cathedral:** One of the finest examples of the decorated gothic style in the country. Tel. 01392 285983

**Guildhall:** Dating from 1330 Exeter's Guildhall is one of England's oldest municipal buildings. Tel. 01392 665500

**Quay House Visitor Centre:** Discover Exeter's 2000 year history with a fascinating film show. Tel. 01392 271611

**Red Coat Guided Tours:** To find out more about Exeter's rich history and heritage why not join a free guided tour. Tel. 01392 265203

**St. Nicholas Priory: A Tudor home.** Experience Tudor life in the heart of the City. Tel. 01392 665858

**Tuckers Hall:** The medieval guildhall of the only surviving trades guild in Exeter, the Incorporation of Weavers, Fullers and Shearmen. Tel. 01392 412348

**Exeter's Underground Passages:** Explore beneath the streets of Exeter through these medieval vaulted passages. Tel. 01392 665887



For information about Exeter contact  
**Exeter Visitor Information & Tickets,**  
Dix's Field, Exeter EX1 1GF

Tel. 01392 665700 Fax. 01392 665260

Email: [evit@exeter.gov.uk](mailto:evit@exeter.gov.uk) [www.exeter.gov.uk/visiting](http://www.exeter.gov.uk/visiting)  
[www.exeterandessentialdevon.com](http://www.exeterandessentialdevon.com)



Exeter City Council



Printed on recycled paper

10k 2009



# The City Wall

## Trail

## Self-Guided Walk



Discover the history of Exeter's City Wall and the key events that have occurred throughout its past.



Exeter  
It's a Capital City



## Start your walk in Castle Street just off the High Street

### 1 Castle Street

The City of Exeter has almost 2000 years of history and during this time its wall has saved the city on more than one occasion. As well as being a defensive structure the wall has been the backdrop to ceremonies and punishments.

From here turn right onto Bailey Street, turn left into Northernhay Place then up the hill into Northernhay Gardens. Follow the wall until you arrive just below Athelstan's Tower (opposite the band-stand) and discover why the wall was built . . .

### 2 Northernhay Gardens

The first major settlement of Exeter was by the Roman 2nd Augustan Legion in 55AD. A stonewall protected this strategically important position. After the departure of the Romans the city was virtually abandoned, however, life was re-established in Saxon times. Here you can clearly see the different types of stone that were used at different times.



Follow the path up the steps and continue through Athelstan's Tower, take the first path to your right, after 100 metres you will be at . . .

### 3 Norman Gatehouse

Although not strictly part of the wall, the castle was an important part of the city's defences. Built in 1068 following the Norman siege of Exeter, it established a foothold of control for the Normans over the previously rebellious citizens of Exeter. This gatehouse is the oldest standing castle building in Britain.

### 4 North Gate

This was the site of one of the smallest of the city's four main gates. It was burnt down during the Perkin Warbeck Rebellion and also damaged during the Prayer Book Rebellion.

From here walk along Bartholomew Street East, follow the wall onto Bartholomew Terrace. At the end you will find more about . . .

### 5 Snayle Tower

On the corner of Bartholomew Terrace in front of you once stood a large semi-circular tower that dominated the defences to the west of the city. It offered an excellent observation point for the many sieges of the city particularly during the English Civil War.

Continue to the end of Bartholomew Street, cross Fore Street, down the hill at the end of the West Street you will be at the site of . . .

### 6 West Gate

This gate was the main entrance to the city from Plymouth and Cornwall and was a particularly busy place at the height of the woollen cloth trade.

Cross Western Way at the pedestrian crossing, turn left and walk uphill to Lower Coombe Street, turn right down Quay Hill, at the bottom you will be at . . .

### 7 Water Gate

This gate was added to the city wall circuit for commercial rather than defensive reasons. During the 16th and 17th centuries this area was involved in the woollen cloth industry, be it finishing the cloth on Exe Island or exporting the cloth from the Quay.



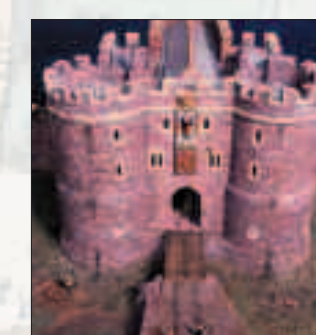
Continue on the footpath up the hill to Western Way, from here either cross Western Way via the Yaroslavl Bridge or to your right over the pedestrian crossing. The next board is located on the other side of South Street, here you will find out about the . . .

### 8 South Gate

This was the most impressive of all the city gates. This stretch of wall was very vulnerable from attack, so a number of smaller towers were built.

Follow the footpath alongside the city wall to Cathedral Close, turn right on to Southernhay, at Southernhay turn left then continue behind Broadwalk House to discover more about . . .

### 9 East Gate



Being the principal entry point to the city, this gate played a vital defensive role during the many sieges of Exeter, especially during the Perkin Warbeck rebellion.



Course of City Wall approx 3km (1.9 miles)

1 Location of Information Panels

Walk through Rougemont Gardens into Northernhay Gardens (stop to notice the herringbone structure of the wall). Turn left, then cross Queen Street onto Northernhay Street, after 50 metres turn into Maddocks Row, at the end turn right, at Paul Street turn right to the south end of the Iron bridge. You are now at the site of . . .